



jt | JORGENSENTURNER



**Romney Court, Shepherds
Bush, London**

£310,000

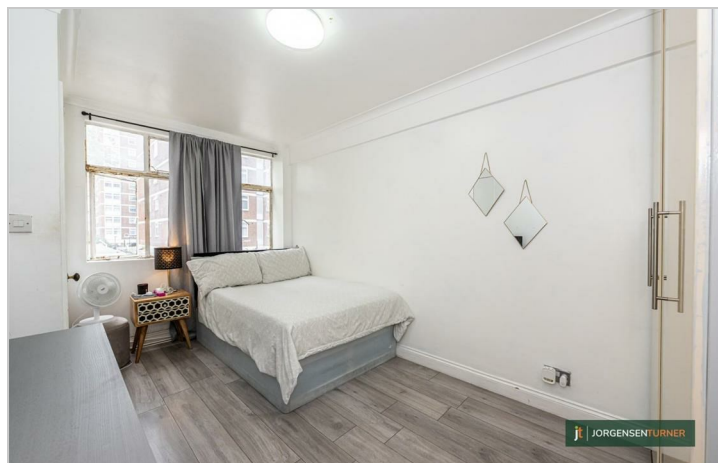


 1
  1
  1
  D

jt

Romney Court, Shepherds Bush, London

£310,000



Summary Description

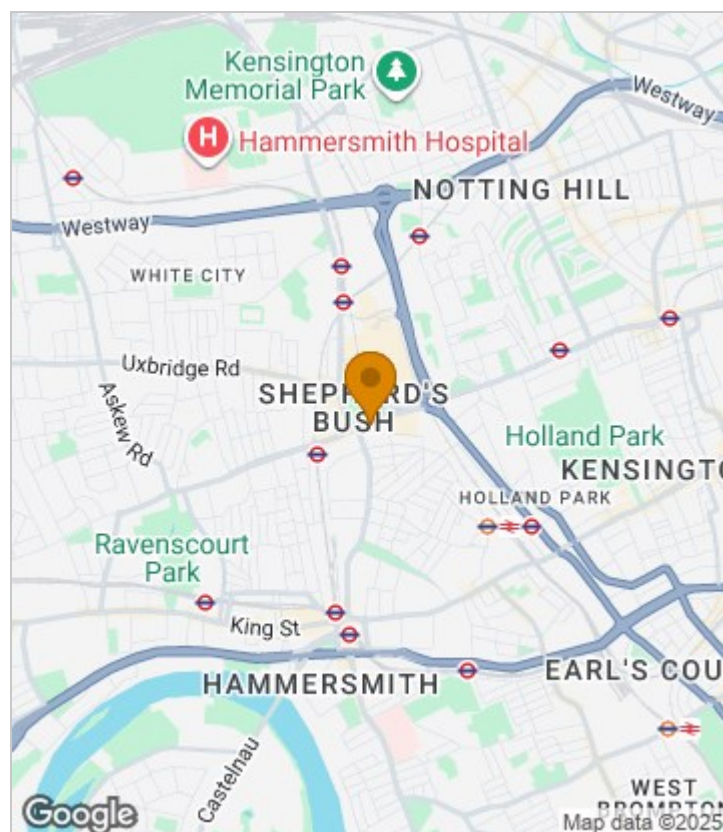
Located on the second floor of an attractive Art Deco building, this well-presented one-bedroom apartment offers exceptional convenience with easy access to the vibrant amenities of central Shepherd's Bush, Brook Green, and Hammersmith.

The property features a bright and spacious open-plan kitchen/reception room, a generously sized double bedroom, and a modern three-piece bathroom. Offered chain-free with a long lease, this apartment represents an ideal first-time buy or investment opportunity. Early viewing is highly recommended.

Romney Court is perfectly positioned on Shepherd's Bush Green, just moments from the world-renowned Westfield Shopping Centre, as well as a variety of independent shops, cafes, bars, and restaurants along Shepherd's Bush Green and Shepherd's Bush Road.

Transport links are superb, with Shepherd's Bush (Central Line), Goldhawk Road (Hammersmith & City Line), Shepherd's Bush Overground, and a wide selection of bus routes from Shepherd's Bush Bus Station, providing quick and easy access into Central London and beyond.

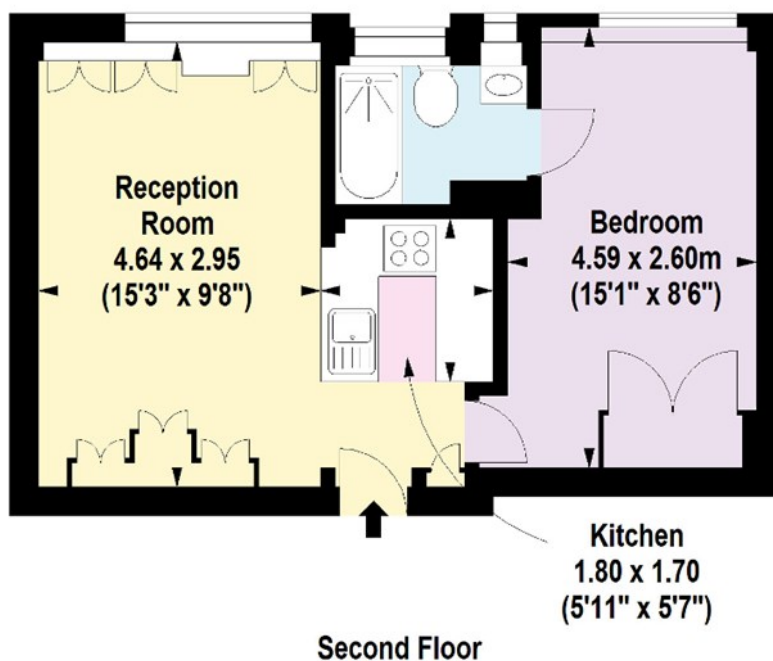
Area Map





Floor Plan

jorgensen
turner
estate agents



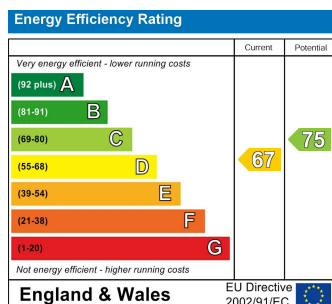
For Identification Purposes Only. Not To Scale. © www.totalvista.uk 2018

Romney Court, W12

Approx. Gross Internal Area
33.72 Sq M - 363 Sq Ft

TOTALVISTA

Energy Efficiency Graph



Viewing

Please contact our Sales SB Office on 0208 740 8740 if you wish to arrange a viewing appointment for this property or require further information.

- SECOND FLOOR FLAT
- PRIME LOCATION
- GREAT CONDITION
- CHAIN FREE THROUGHOUT
- LONG LEASE
- CENTRAL LINE TUBE
- CLOSE TO WESTFIELD SHOPPING CENTRE
- HAMMERSMITH AND CITY LINE TUBE

For further information contact:

Sales SB, 234 Uxbridge Road, Shepherds Bush, London, W12 7JD

Tel: 0208 740 8740 Email: enquiries@jorgensenturner.com

<https://www.jorgensenturner.com/>

Disclaimer

These particulars, whilst believed to be accurate are set out as a general outline only for guidance and do not constitute any part of an offer or contract. Intending purchasers should not rely on them as statements of representation of fact, but must satisfy themselves by inspection or otherwise as to their accuracy. No person in this firm's employment has the authority to make or give any representation or warranty in respect of the property.

